



# OBAN AND LORN ANGLING CLUB

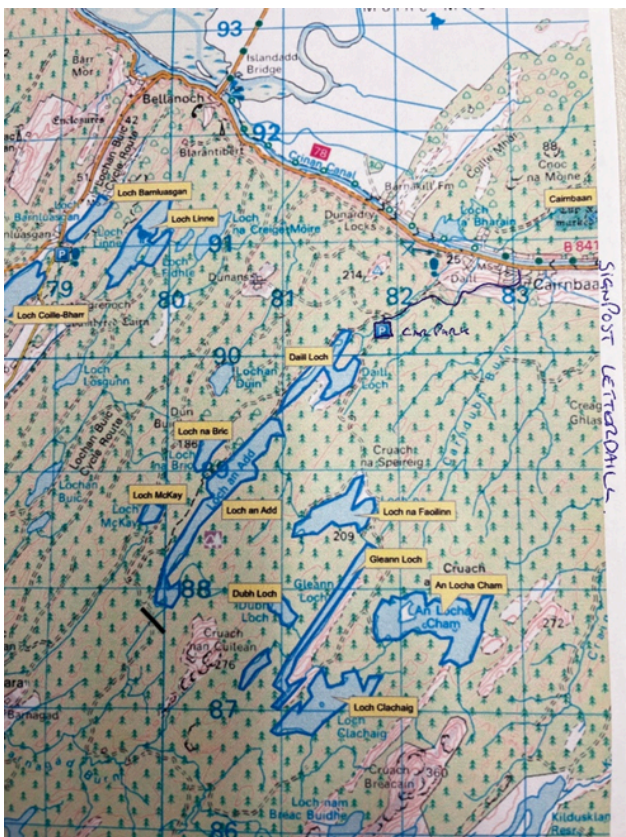
Charity No. SCO47428

Newsletter 2026 - Number 2

26th April 2026

Dear Member

Further to the Newsletter Number 1, I am following up with full details of the competition we shall be fishing against Lochgilphead and District Angling Club on Sunday May 3rd. Their Secretary has kindly provided the map below which shows the meeting point:



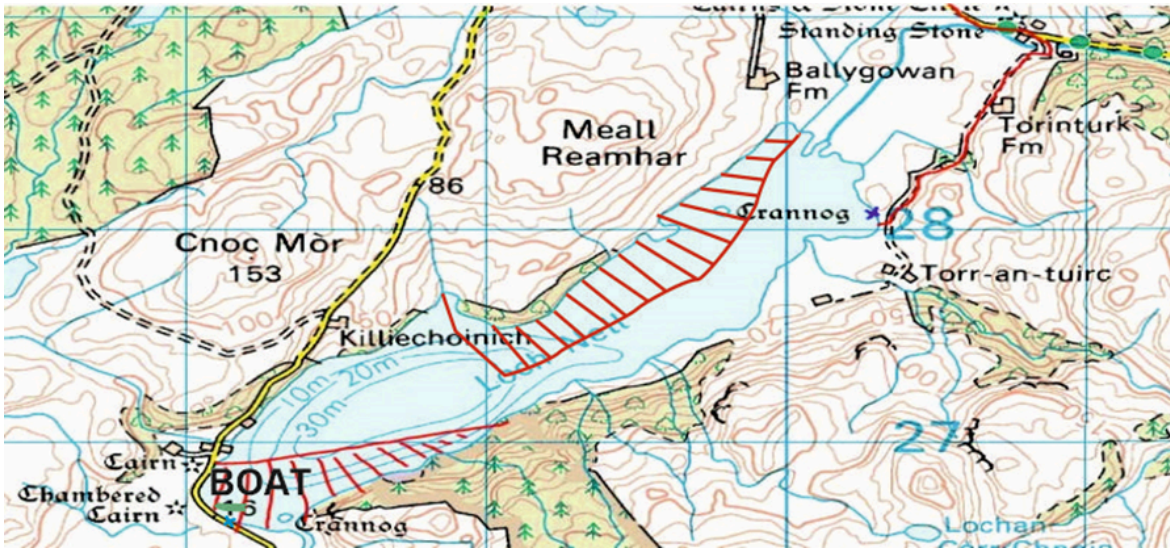
The instructions for access are as follows:  
Cross the canal at Cairnbaan then turn left into "Letterdail" after forestry workshops. Keep left and follow road up the hill (tarmac).

The two Clubs' competitors will meet where shown at 10:00 and fish until 16:00 for the weigh-in, followed by a meal at a local restaurant. The aim of the day is to give a chance for members to socialise and meet members of another Argyll Club while having fun. The competitive spirit is present, but not intense and the main purpose is pleasure in the company of other fishermen. OLAC members' attendance has been poor in recent years, so if you could try and get down it would help to balance up the numbers. Any further information can be provided by our Jim Grout on 07772 288497.

Contd...

## Loch Nant Boat Moved to Nell

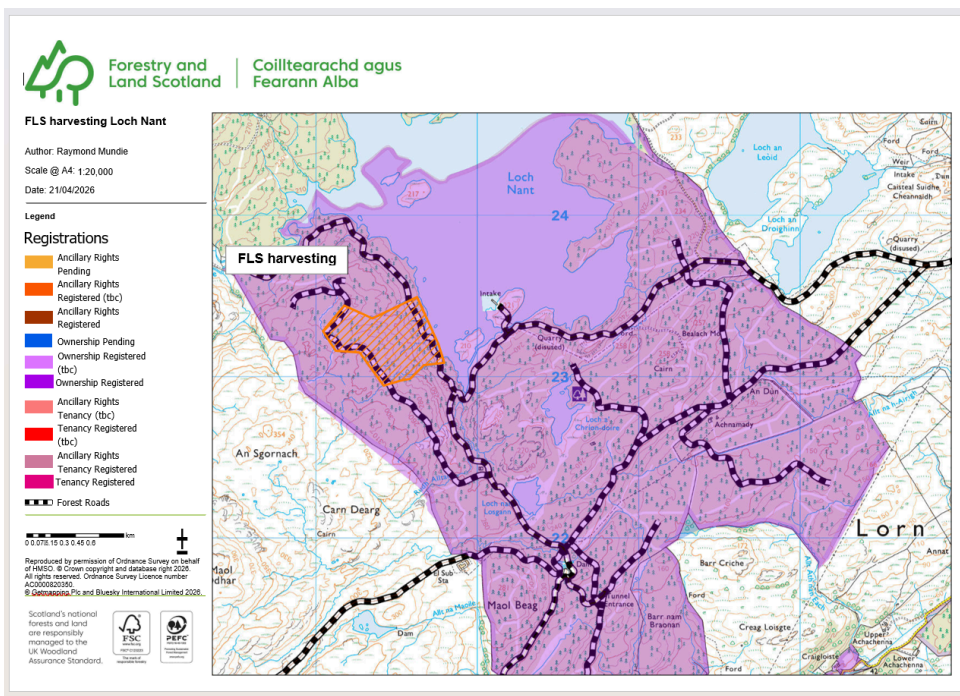
The work party last Sunday April 19th was a success. We removed the boat from its winter lay up beside Loch Nant and launched it on Loch Nell, where it is now moored at the new location on the south shore. This gives us an opportunity to fish Nell from now until the end of the season, but please note the map below (taken from page 23 of the Fishing Guide) which shows the areas which we are forbidden to fish.



Please refer to Page 23 of the Fishing Guide before taking the boat out - there is important information there regarding the limits to fishing on Loch Nell. And yes, the immediate surrounding of the boat is not to be fished. Also please note that there is NO SHORE FISHING available to members of OLAC on Loch Nell. If you want to fish it, book the boat...

## Forest and Land Scotland - Loch Nant

Our landlord for much of Loch Nant is Forest and Land Scotland, who have forwarded a harvesting plan which they will shortly implement (see the map below, orange area).



This affects Loch Nant and the access to the Sior Lochs. Please be aware that the harvest will need heavy plant and more traffic on the forest roads than usual. The activities will be signposted. You should follow any instructions on the signs and obey any further requests from FLS staff and contractors who may be present. Use your hazards, drive slowly (10mph or less) and be alert for any other vehicles on the road.

Contd...

Loch Dubh Mhor, Kilmelford

Charlie, Iain and myself went out to the Loch on Friday 24th to give the boat there some long-overdue attention to its keels. The boat went aground in the winter of 2024/25 and lost one of its bilge keel bands, with the other taking a battering and the main keel band being curled up like the strip on a corned-beef tin. I sourced replacements last year and Iain helped to drill, countersink and cut them to length at one of our Friday morning Hut sessions. We have just been awaiting a weather window to go and fit them. When Charlie offered his services last week this seemed like an ideal opportunity and the boat is now ready to launch. It will need a BIG work party. We brought the boat back to the turning area to make it easy to work on (which it was) but we took advantage of a temporary bridge of felled timber to gain access. It will now have to go back into the water the old way - up and over a steep bank. I'm going to schedule May 24th for this - a few weeks away, but I'm hoping we can get a good turn out with at least six and preferably eight attendees. I will send out further notice nearer the time. Loch Dubh Mhor is a wonderful loch to fish from the boat and it is worth the effort to put it back into service.

Kind regards

Jonathan Anglesea  
President, Oban and Lorn Angling Club

Tel: 01631750214  
Mob: 07766811088