



# Fishing Guide

## And Other Useful Information

**Please leave this book for others to enjoy.**



The Oban and Lorn Angling Club was founded in the 1940s but fell away in the fifties. In 1972 the club was reformed by a group of keen anglers to promote fly-fishing links in the Lorn of Argyll with the leases of seven lochs. Today the club has some ten boats on eight lochs with additional lochs available for bank fishing only. We have further access to one side of the River Awe below the weir on the Taynuilt side for season ticket holders.

Our lochs vary from small puddles to large waters each having its own features containing mainly wild Brown Trout though there is a chance of catching an Artic Char in some of the lochs; also escaped Rainbow Trout in Loch Avich. All the wild trout respond to the traditional fly patterns. Outboards to a maximum of 5hp are allowed where boats are available on the larger lochs.

Our club house has a meeting room and workshop which is used to repair the boats in the off season with a further compound for storing the boats and trailers. We are always looking for members to help out with the repairs and upkeep of the club house and boats.

### **Permit Sellers – 2025 Season**

Day, three day and Weekly permits can be purchased from:

**The Anglers' Corner**, 114 George St., OBAN  
Tel: 01631 566374

**Cuilfail Hotel**, KILMELFORD - Tel: 01852 200274  
Tel: 0141 212 8880

**Grahams Stores**, Main Street, TAYNUILT  
Tel: 01866 822248

## Rules

All those who fish club waters should show consideration for others who live by or enjoy the countryside by observing the following rules.

The Season for Brown Trout Runs 15th March to the 6th October.

1. Do not park your car where it causes an obstruction.
2. Leave all gates open or closed as you find them.
3. Do not take dogs onto the hill.
4. Do not light fires, drop cigarette ends or matches.
5. Take all litter home, including plastic bags and discarded monofilament.
6. Do not disturb stock, interfere with wildlife or destroy plants.
7. No fish under 10 Inches to be removed
8. No Spinners\*
9. No Bait Fishing/worming\*
10. No Bubble floats\*

*\*Children only under the age of 16 are allowed to fish with these methods when accompanied by a paying adult.*

Try to ensure your own safety and comfort on the hills. It can snow until the end of May and there can be frost from the beginning of August. Windproof and waterproof clothing should always be worn or carried. It is advisable to wear stout walking boots or shoes and carry waders to the loch. Wear something which is easily seen. Have a complete change of clothing in the car. If you must go fishing alone always tell someone where you are going and when you intend to return.

Always keep to the access routes as shown on the maps and return by the route you came.

Avoid steep slopes and flat marshy ground with peat bogs. Carry with you a map, compass, torch, whistle and chocolate to replace lost energy. In the summer it is

always advisable to have insect repellent and clothing with a hood to combat midges and horseflies.

The most successful trout flies are the Butcher, Peter Ross, Greenwell's Glory and Grouse and Claret size 10-14. Butchers, Teal wing flies and Zulus size 8-10 are best for salmon and sea trout.

PLEASE REMIT CATCH RETURNS FOR ALL WATERS - EVEN IF YOU BLANK.

© 2025 Copyright Notice: No information contained within this guide may be reproduced without the permission of the trustees of Oban and Lorn Angling Club.

Check our website for updates – the most recent version of this guide may be downloaded FOC from the website.

**OLAC Website:**

<http://www.obanandlorn-anglingclub.co.uk/>

**email address:** [mail@olac.org.uk](mailto:mail@olac.org.uk)

**Facebook:** <https://www.facebook.com/pages/Oban-and-Lorn-Angling-Club/347282711979239>

### **CHARGES FOR TROUT FISHING 2025**

Permits:

£10 per Day

£25 for 3 Days

£45 per week

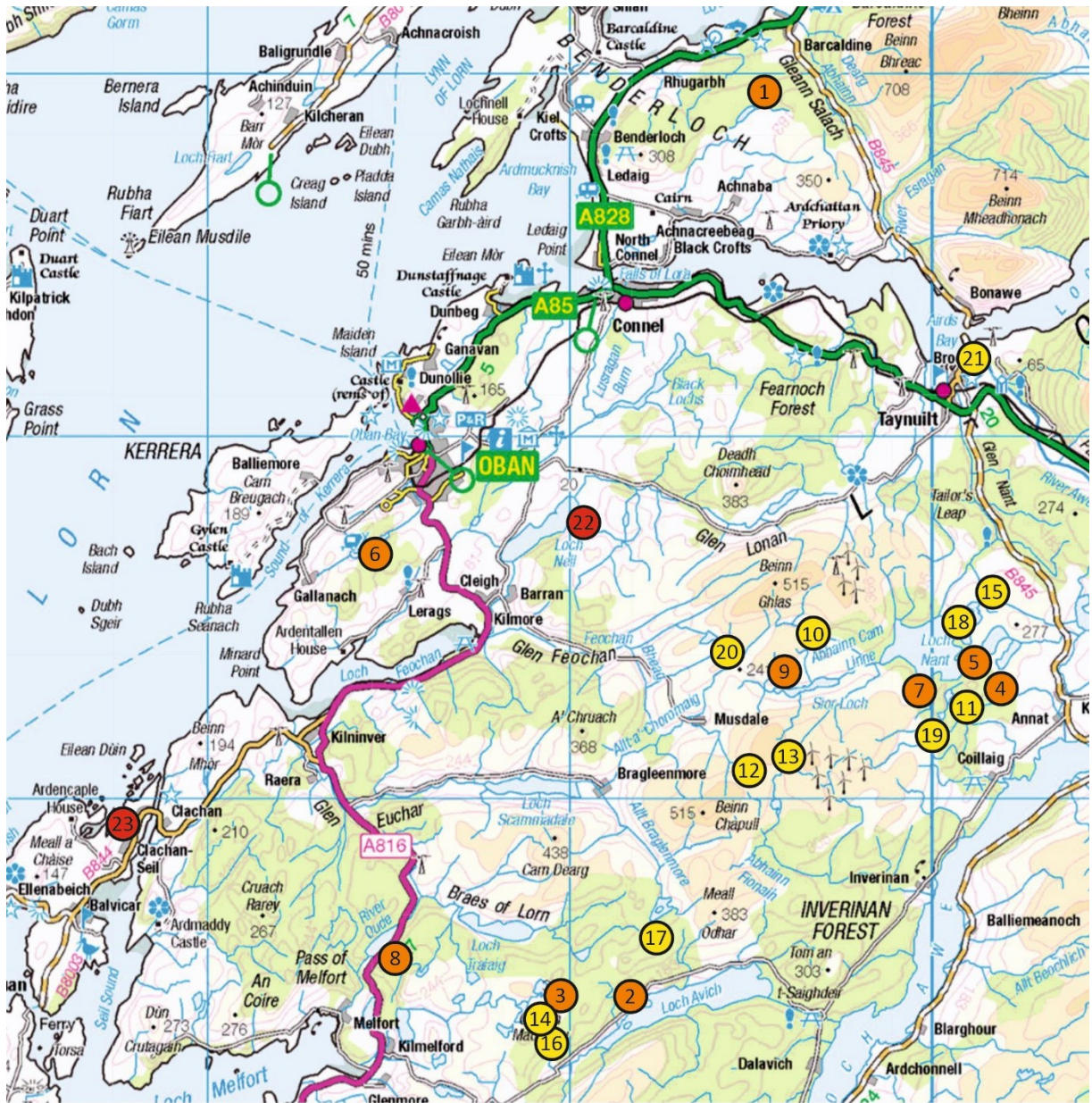
£75 per season (£55 for concessionary members)

Boats can be booked at no charge by those taking out weekly permits or full members paying £75 or £55 for the season. Day and three-day permit holders are not permitted to book boats.

Life jackets are mandatory for all boat users and it is the responsibility of the boat user to provide them.

NOTE: Maximum of three persons per boat in all lochs except Seil, Sior and Gleann a Bhearraidh where the maximum capacity of the boats is two persons.

### Location of Oban and Lorn Angling Club Fishing Lochs:



Key (for loch numbers, see page 6 of this guide)

- 1 Boat and bank fishing
- 11 Bank fishing only
- 22 Boat fishing only (Full season members only)

## Index to List of Club Waters – 2025 Season

### Boat lochs (Can also be fished from the bank except Loch Gleann a' Bhearraidh)

	Page No.
1. Dubh Loch Mòr, Barcaldine - one boat	13
2. Loch Avich - two boats (limited bank access)	9
3. Loch Dubh Mòr, Kilmelford - one boat	11
4. Loch an Droiguinn - one boat	19
5. Loch an Leòid - one boat	19
6. Loch Gleann a' Bhearraidh - one boat (2 rods only - no bank fishing)	25
7. Loch Nant - one boat	16
8. Oude Reservoir AKA Loch Oude - one boat	24
9. Sior Lochs - one boat (on middle loch)	20

### Bank fishing (In addition to the above boat lochs except Loch Gleann a' Bhearraidh)

10. Loch a' Bharrain	20
11. Loch a' Chrion-doire	16
12. Lochan Airigh-shamhraidh	21
13. Beinn Dearg Lochan	22
14. Loch Dubh Bheag	11
15. Loch Carraigeach AKA The Puddle	15
16. Loch Cruach Maolachy AKA Cruaiche / The Skyscraper Loch	12
17. Loch na Sreinge	11
18. Loch na Squabaich	15
19. Loch nan Losgann AKA The Frog Loch	19
20. Weedy Loch	16

### Fishing on the following is reserved for season members only:

(weekly permit holders not allowed – these waters hold migratory fish and may be fished for sea trout and salmon from February 11<sup>th</sup> until September 30<sup>th</sup> (River Awe) or October 15<sup>th</sup> (Lochs Nell and Seil).

21. River Awe – Polfearn beat	26
22. Loch Nell – one boat (no bank fishing)	23
23. Loch Seil – one boat (no bank fishing)	22

**FLY FISHING ONLY ON ALL WATERS**

## **Annual (Season) Membership Renewal available from:**

The Anglers' Corner tackle shop, Oban

Full & Associate Membership - £75 per year; £55 per year for concessionary members i.e. registered disabled/students/unemployed/over 65s. Juniors are free.

The Anglers' Corner has offered to issue cards and take payment for subscriptions (cash only, please). If it is not convenient to go to the shop, you are welcome to pay your subscription by other means. You can join via the website: visit <http://www.obananlorn-anglingclub.co.uk> and click the "Join Us" button on the home page. You may also pay directly to our bank account: "Oban and Lorn Angling Club", account number 16034069, sort code 80-22-60 please use your name as a reference when doing so. PayPal is another option if you use it: pay to [olac@ymail.com](mailto:olac@ymail.com). New season members and members renewing after May 31<sup>st</sup> should apply for permits to the Oban and Lorn Angling Club Treasurer, Iain Moody on [iain@dunbeg.plus.com](mailto:iain@dunbeg.plus.com).

## **Contacts:**

President: Jonathan Anglesea 01631 750214

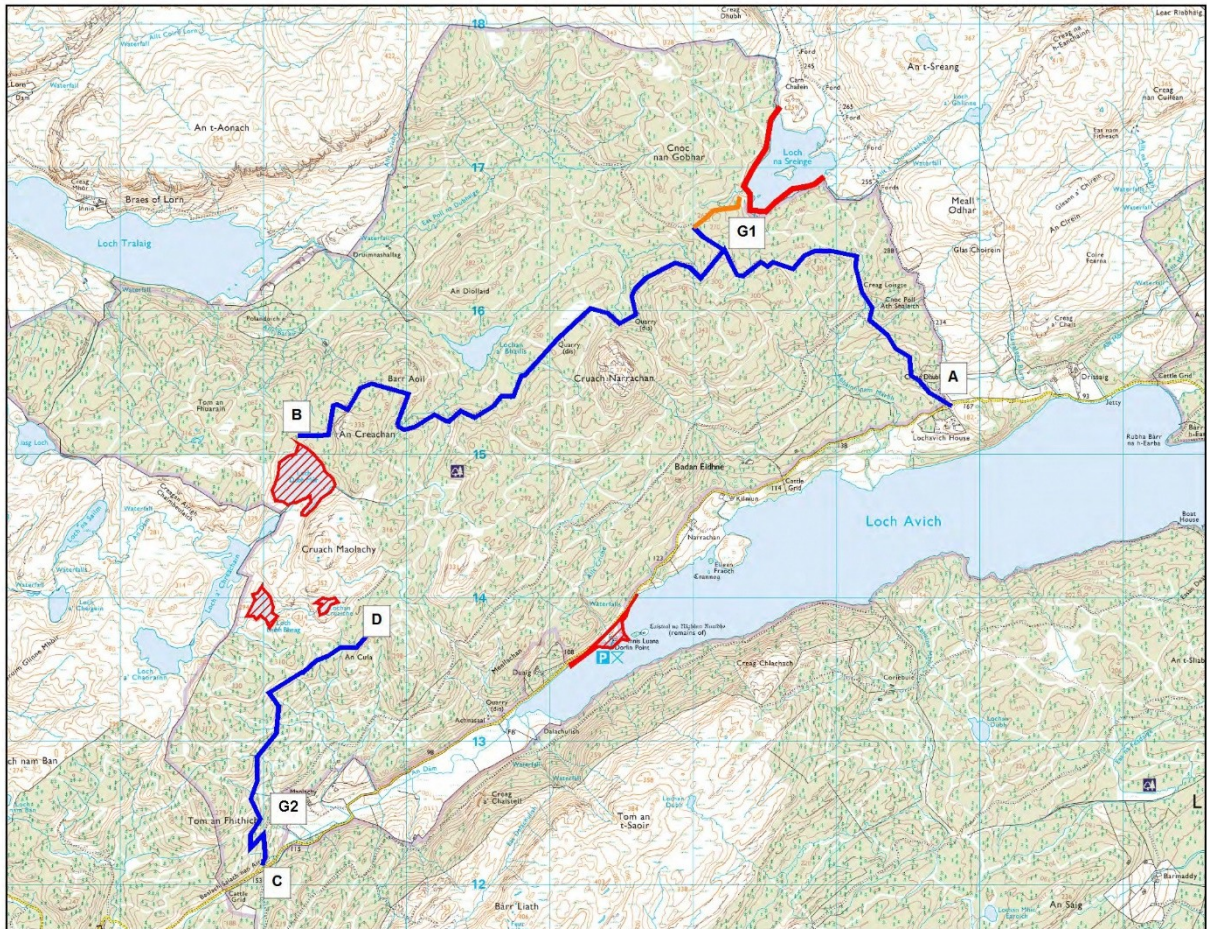
Secretary: Allan Coutts 01852 300231

Treasurer: Iain Moody 07774 931701

Boat Bookings: Andy MacDougall 07810 308994

A boat booking is not complete until confirmed by the Boat Booking Recorder, Andy MacDougall, who can be contacted on **07810 308994** **between 8am and 9pm only.**

## Loch Avich and the Maolachy Lochs



**Access:** Travel south from Oban 15 miles on the A816 to Kilmelford. Then left at the village store on to the single file road signposted Loch Avich (continue for about 4 miles). Here there is a parking and picnic area known as Dorlin Point. This is where the club boats are moored. Access is through the padlocked gate – the code is obtained on application to the permit seller or Boat Booking Recorder.

## **Loch Avich** two boats, limited bank fishing

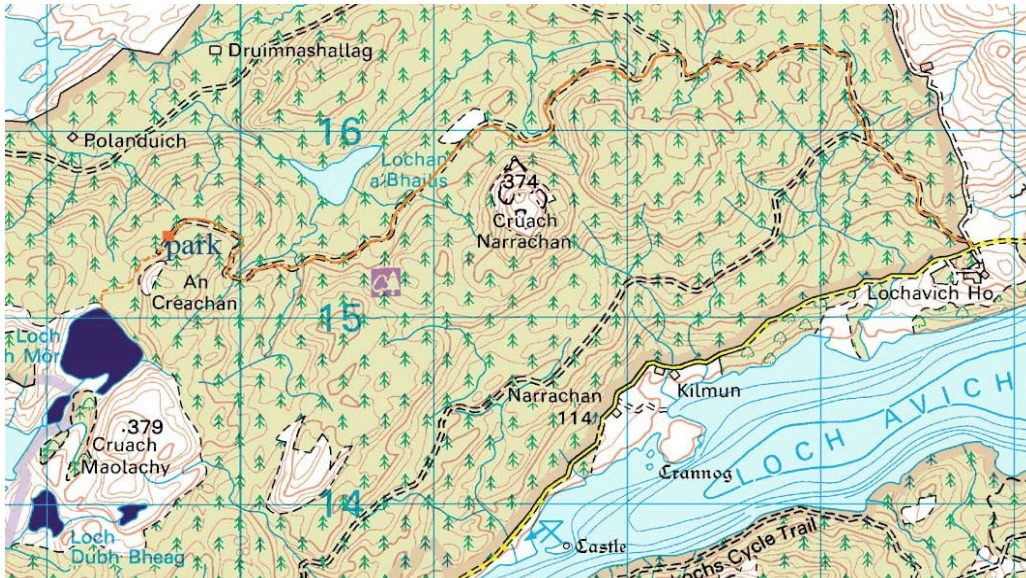
Loch Avich is 3½ miles long, 1 mile wide and 150 feet deep. It holds plenty of small trout with regular fish over 1lb being caught; there are rumours of monster trout here. The club has two boats on this water (available for weekly permit holders) which is the best way to fish the loch. The club does have limited bank fishing extending from Dorlinn Point picnic area west to the head of the Loch and approximately halfway down the opposite shore (see map). Please respect the No Fishing zone at the western nature reserve



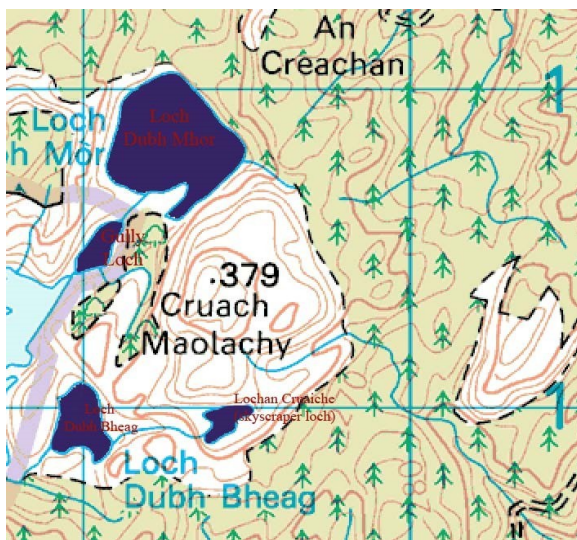
**Flies:** Standard Hill loch flies, brown and gold with mini muddlers seeming to be quite deadly at times.

## Cruach Maolachy Lochs

This is a group of small hill lochs above Loch Avich (See Map for Avich Above) and a detail location below:



A combination padlock is on the forestry gate at location G2 on the map on Page 8. The combination can be had from permit sellers or when a boat booking is made. The combination can be changed by the FCA or OLAC at any time, so check before setting off to fish.



The condition of the forestry roads, whilst generally pretty good, is dependent on the nature and scale of forestry operations. A combination lock is on the forestry gate but these roads can be closed without notice during periods of harvesting. The forestry commission would prefer anglers to use 4x4 vehicles when using these roads but they can be passable with 2 wheel cars with care. You choose to use these roads at your own risk. Neither the forestry commission or Oban and Lorn Angling Club accept any responsibility for damage to any vehicle.

## Loch Dubh Mhor

**Access:** (See map on Page 8) Access to Loch Dubh Mòr is along a forestry track (point A) that starts opposite Loch Avich house. You park on the forestry road at point B which is within a few metres of the boat and shore. Gate G1 may be locked with a combination lock, whose code will be available when the permit is purchased or from the Boat Booking Recorder. From here you can walk to the other lochs, or you may access the forest track at location C and walk to point D where the lochs are to the west and north as shown on Page 8. **Note some navigation skills are needed to find the lochs other than Loch Dubh Mhor and we recommend you take a map and compass and the skills to use them.**



**Fishing:** Lovely Loch situated in a bowl, very deep in the middle. Offers some very good wading and most fish lie along the drop off. A favourite loch with Club members; fun to fish and often easier to wade than walking the bank. Olives form a main part of the Trout's menu in summer and sometimes fish will hardly look at anything else. Watch out for the occasional golden eagle or osprey overhead.



**Flies:** Standard wets, dries 10-14. Don't be without a Greenwell or selection of Olives.

## Loch Dubh Bheag (pronounced Doo-beg)

**Access:** Follow the narrow inlet on Dubh Mòr keeping the steep slope to your left for ten minutes.



**Fishing:** Great little Loch. Steep heather banks and can be weedy. Contains plenty of small fish with some up to a pound in weight. I have seen some cracking mayfly hatches here.

**Flies:** Standard wets, dries 10 -14.

## Loch na Sreinge (pronounced na sringe)

**Access:** Follow the forest track shown on the Avich map on page 8 from point A to the junction at G1 then take the right turn up to the end of the track shown in blue, Park and follow the orange track down the steep hill to the loch. Only attempt this if you are fit for the climb back up!



**Fishing:** some very good fishing to be had in this loch, but be careful wading because there are fence posts below the surface. The loch is shallow and a floating line is all you need.

**Flies:** Standard wets, dries 10 -14.

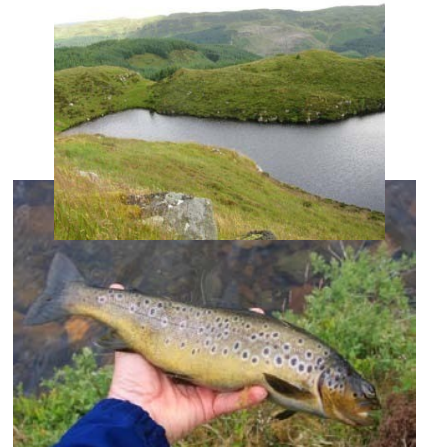
## Loch Cruach Maolochy

(pronounced Croo-ach Mool-achy) aka the Skyscraper Loch

**Access:** Follow the burn that flows into the bay on the east end of Loch Dubh Mòr

Beag for 200 yards then climb the slope to the left. \

**Fishing:** Little more than a scrape in the rock this deep dark hole has a reputation for being dour but it does put out some monster fish from time to time. Patience is the key here.



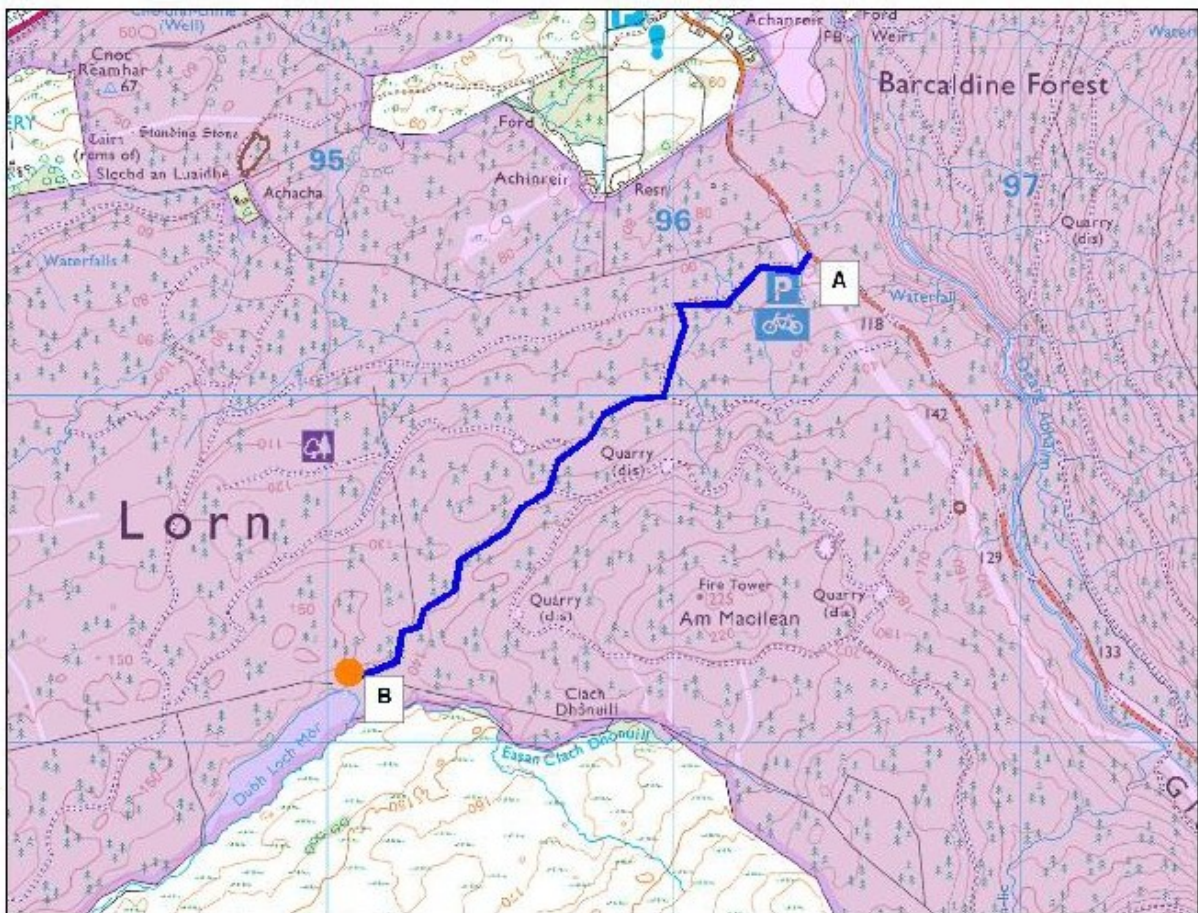
**Flies:** Worth going through the box here to try and tempt a lunker:



## Dubh Loch Mòr, Barcaldine

(pronounced Doo Loch More) Brown trout

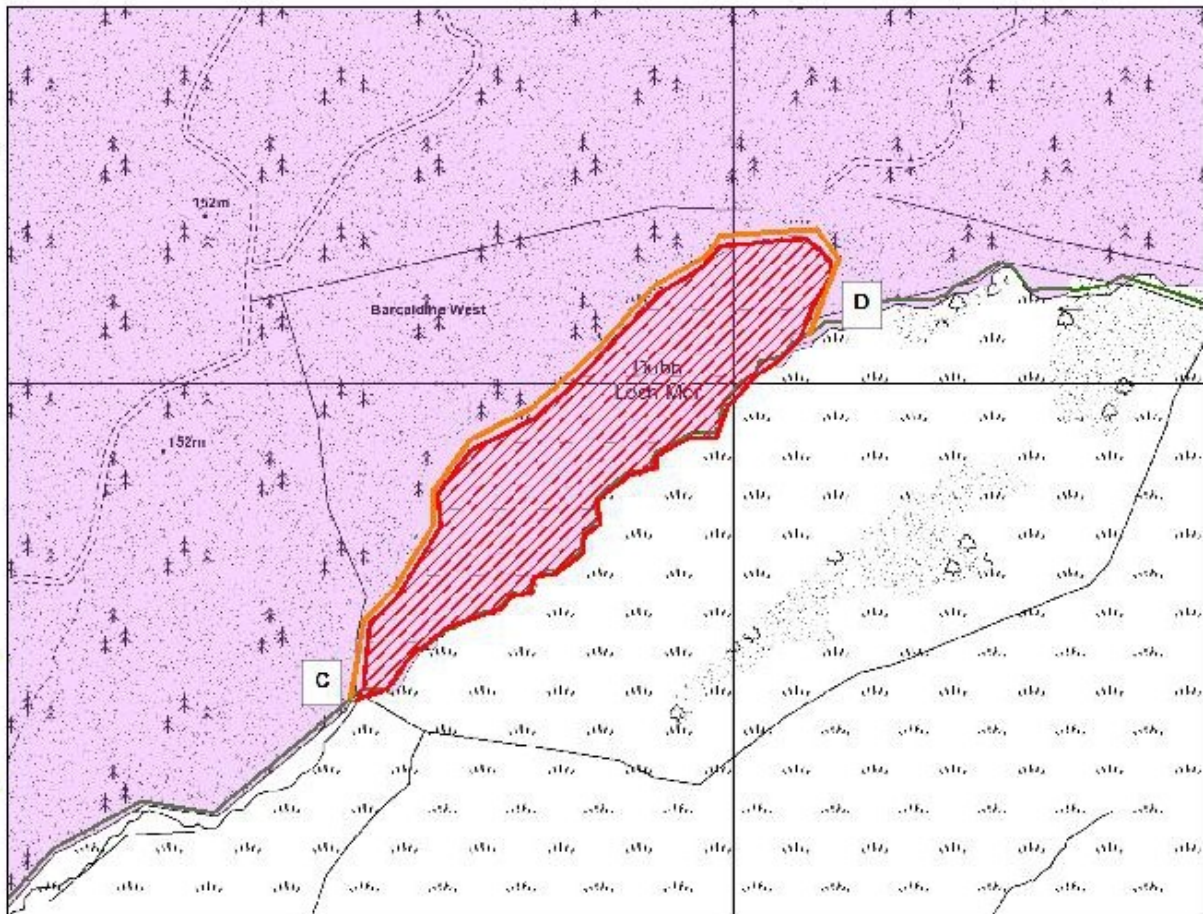
**Access:** Our most northerly loch which is the only one north of Loch Etive. From Oban take the Fort William Road A828 at Connel and cross the Connel Bridge. Head through Benderloch to Barcaldine and take the road to Bonawe on the right hand as you enter Barcaldine village. If you see the Scottish Sea Farms hatchery on the left you have gone too far. Go up the hill on the B road to Bonawe and take the forest track signed as “The Sandpit”. The road is gated and the code is provided with permits and by the Boat Booking Recorder. Follow the forest track shown on the access plan below:



Note that the forest tracks can be confusing, and there are many ways to take a wrong turn. Study the route and memorise the turns at the three junctions you will come to on the correct route– from the gate take the first left, then a right, then a left.

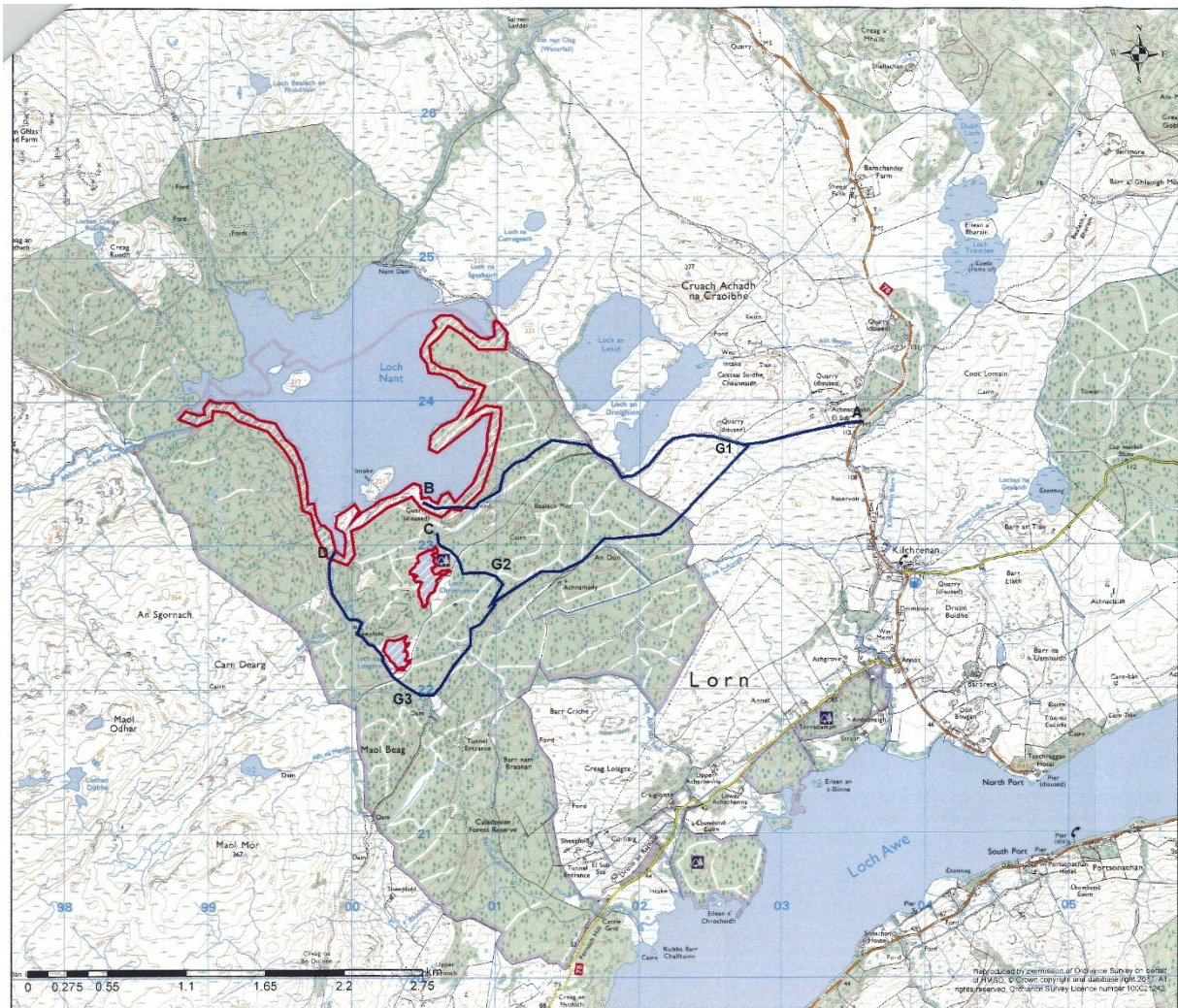
**Fishing:** The loch is quite high above loch Etive and tucked behind Ben Lora, which exposes it to south-westerly winds. It is best fished in a ripple and will produce numerous small trout from opening day March 15<sup>th</sup>. The loch is overstocked, so if you want to help the fishing, take all you catch and make yourself a tasty breakfast of the small (5

to a pound) fish. The bottom is soft so wading is best avoided. The bank along the south east side can also be boggy so watch your step. The north-west side is steep-to and barely fishable. You need the climbing skills of a goat to traverse this bank. When we are able to put a boat on this loch, the fishing could be magical as the scenery is delightful. The short distance from the car park to the loch makes float-tubing a popular method here.



**Flies:** The fish are keen – there are so many that they cannot afford to be choosy. General wets and dries in sizes 10-16 will see fish taking readily at any time of the day, but an evening fishing into a blow from the south west will take a fish every cast.

## The Nant Basin

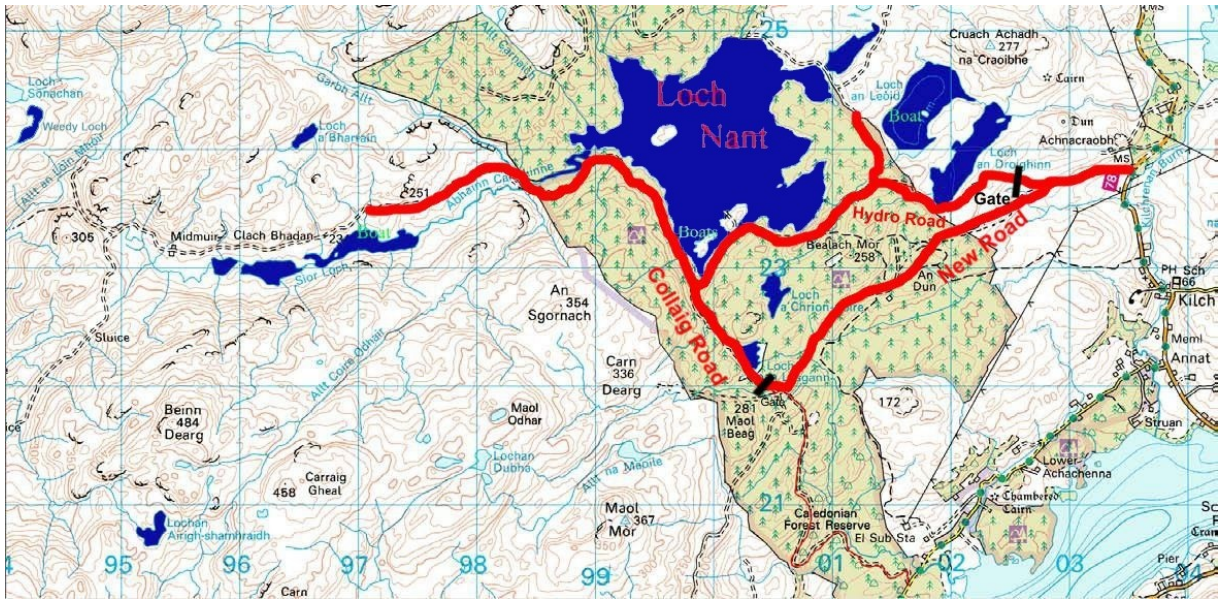


### Access:

From Taynuilt take the B845 for Kilchrenan. Half a mile before the village the Nant Hydro Road is signposted on the right. Take this road for half a mile or so until you reach a junction with the New Road on the left (see map), which leads across the hill to the Collaig Road. Beyond the right fork of this junction you will see the Nant Gate (G1 on the above map). As of July 2018 the Hydro Road, continuing from the New Road junction, has been resurfaced and is the recommended route to the lochs as it provides the quickest access and is slightly better for vehicles than the Collaig Road. Key holders may use the Hydro Road and take cars through the locked gate at the position shown, although restrictions can apply at times. If the Hydro Road is closed for maintenance or forestry operations, the only access is via the New Road and then the Collaig Road, where another (occasionally) locked gate G3 is positioned just beyond its junction with the New Road (see map).

The Collaig and Hydro Roads are best negotiated in a 4x4, and anglers use these roads at their own risk. Neither Oban and Lorn-Angling Club, nor the Forestry Commission, can be held liable for any damage to vehicles on these roads. Drive carefully – there is very little if any mobile phone signal and it is a long walk out to Kilchrenan if you break down or come off the road and get stuck.

## Loch Nant



If you take the New Road to the Collaig Road, follow the Collaig Road north, taking the right hand fork where the road divides. The road on the left fork looks better but does not go to the lochs. Proceed along a very poor section of road for around half a mile, when it joins the metalled Hydro Road on Loch Nant. At this junction you can take a right for about 200 yards where both of the Nant boat is moored – point B on the map on Page 13. Alternatively, turn right and continue for another few hundred yards for the 'Picnic Area' and river mouth. Continuing further west up the glen will bring you to the Midmuir and Musdale Lochs. A right turn off the Collaig Road at the junction of the Collaig road and Hydro Road will take you eastwards above Loch Nant on the Hydro Road; proceed 500 metres to a left turn for the 'Tower'. A further 0.9 mile will bring you to another junction. Turning left at this junction will take you to the 'Puddle' lochan then the Hydro Dam itself. Turning right will take you to Loch an Leòid and Loch an Droighinn, the road then continuing to complete a circuit to the Hydro Road gate and the New Road junction (see map above).

If you start on the Hydro Road itself, follow the above directions in reverse for navigation west from the Hydro Road gate.

Keys for the locks on the gates on the Collaig and Hydro Roads are obtainable from The Anglers Corner, Oban. They are available on payment of a deposit of £15 and allow access to the lochs by vehicle. The forestry roads, which are not metalled, are potholed, rutted and unsuitable for cars with low ground clearance; 4 x 4s are recommended.



The Nant boat – March 2023

**Boat:** As described above, the boat is usually moored at point B on the map on Page 15, accessible from the road to the tower. Park at the Tower and walk back 50 yards – the boat is in the inlet on the east of the road. The photo above shows the boat seen from the road. The walk down and back is easy and the main loch is reachable to the left before the promontory in the mid-distance.

One of the most popular Club Lochs, producing fish from very brown fish with deep red spots to quite silver fish, there are some hot spots within the loch which will produce fish after fish.

Traditionally fishes best March to June and comes on again in September.

In the summer, evening offers the best chance of sport. Fish average 1/2 to 3/4 lb (with fish of a few pounds not uncommon) and can be caught anywhere. The Loch does have hot spots and it is not unusual to hit an area where fish are caught one after another from the same spot. Equally there are days where you do not see a fish. On a good day expect to catch double figure baskets.

Favoured places are any point or headland, gullies, anywhere a stream enters the Loch and around the islands. Terrific variation of from almost black to golden and some that could be confused for Sea trout.

In the summer there can be some terrific hatches of flies and excellent boat fishing.



When Loch Nant is low, the exposed soft mud is dangerous. Do not venture onto these areas.

SSE have a policy that keeps the level low much of the time to allow storm surge conditions to be ameliorated by holding flood water from the catchment in the loch. This prevents flooding in Taynuilt but sees Loch Nant deprived of water for long periods. Despite this, the loch can still fish very well, especially from the boat. When bank fishing, be very careful when the level is low, large areas of very soft mud are uncovered. **Walk around; DO NOT attempt to cross these.** Nant is also difficult to walk round when the water is very high and like fishing on the moon when the water is very low.

**Flies:** Standard wet and dries 12-14. Do not leave home without a Bibio. Lures and large flies work well when the fish are on.

## Loch an Droiguinn and Loch an Leòid aka The Flemings' lochs or Barachander Lochs Boat and bank fishing on both lochs.



**Fishing:** Clear Lochs set on limestone substrate and offer very scenic fishing with excellent views over Ben Cruachan to the NE. Wading is good. Large weed beds appear on both waters as the season progresses. On the down side the average weight of fish in both waters is low with few fish reaching even half a pound. If you have the persistence to fish through these tiddlers, there are some decent fish to be had when a hatch brings them up. It's a numbers game on these lochs.

Of interest are the disused Lime quarries and workings and the ancient hill fort to the east. Scottish Water draws potable water from these Lochs and so outboard motors of any kind are forbidden on the boats.

**Flies:** Standard wet and dries 12-14

## Loch nan Losgann aka 'The Frog Loch'

**Access:** Lies beside the Collaig Road a few hundred yards from the Hydro Road junction (see map),

**Fishing:** Weedy little Loch that is difficult though not impossible to fish from May on. Average weight of trout is around the pound mark with bigger fish in the 2-3lb range taken fairly regularly. The roadside shore is difficult to fish due to scrub, but other parts of the Loch offer good firm wading on gravel between the reeds. Feeding is varied, so it is worthwhile changing flies.



**Flies:** standard wet and dries 12-14, deer hair sedges worth a bash.

## Sior Lochs (pronounced Sheer lochs)

**Access:** From Loch Nant continue on the Hydro road for about a mile, alternatively take the A816 out of Oban south for four miles to Kilmore turning left at the signpost Barran/ Musdale/ Kilmore, follow the road for 1/4 mile then take a right following the sign for Musdale for about four miles. Park at quarry past the signpost indicating public footpath to Kilchrenan. Walk on this footpath for about 15 minutes and up the gully with the pipeline turning left onto the Hydro road at the top.

**Boat:** The Club boat is moored on the middle Sior Loch but can be steered through to the lower loch when the water level is high.

**Fishing:** This chain of three lochs is situated in a remote glen with prolific bird life. The lochs are packed with lots of nimble, hard fighting little brownies that are easily caught. Fishes best earlier in the seasons (April - June) before weeding up. The top/ smaller loch can put out the occasional bigger, minnow fed trout. Great fun fishing in the evening with only the sound of curlews for company.

**Flies:** Standard wet and dries 12-14



## Loch a' Bharrain (pronounced Loch Ah-Varr-Ane)

**Access:** As per Sior Lochs, then follow the burn that enters the larger (bottom Sior Loch) at its west end. A fairly easy walk of about ten minutes.

**Fishing:** A little lochan that is rarely fished but worth a visit. The east end weeds up quite heavily my mid season. Packed full of small hard fighting trout with the odd keeper. A good fun little Loch.

**Flies:** Standard wet and dries 12-14

## **Lochan Airigh-shamraidh** (pronounced Ah-ree Sour-ee) aka The Horseshoe

**Access:** From the Nant continue to the end of the Hydro road (about four miles) or as per the Sior Lochs except that you turn right at the top of the gully for about a mile. At the end of the Hydro Road follow the burn up the hill for about 1/4 mile then take the left fork up through the gully following the burn. The terrain flattens out for the last few hundred yards before the Loch. Only a mile's walk from the road but seems longer (takes from 30-60 minutes depending on your fitness). Leave the waders at home.

Worth it alone for the spectacular views over the Firth of Lorn and the Isles.

**Note some navigation skills are needed to find this loch and we recommend you take a map and compass and the skills to use them**

**Fishing:** This great little loch is full of features; bays, shallows, points, boulders, deeps and reed beds. Fishes from end of April to end of season. Trout vary from ½ - 2lbs and are fairly easily caught. The Loch has some of the prettiest speckled fish around with spots extending onto the tails on some fish (unusual).

**Flies:** Standard wets, dries and mini muddlers, 12-14.



## Beinn Dearg Lochan

**Access:** From the far end of Airigh Shamrigh walk north east skirting the hill then swing left picking up the burn that drains the loch. About ten minutes walk. The Loch is situated below the steep hill to the north.

**Fishing:** Can be dour but has a reputation for putting out fish over 2 lbs.

**Flies:** Worth going through the box here to try and tempt a lunker.



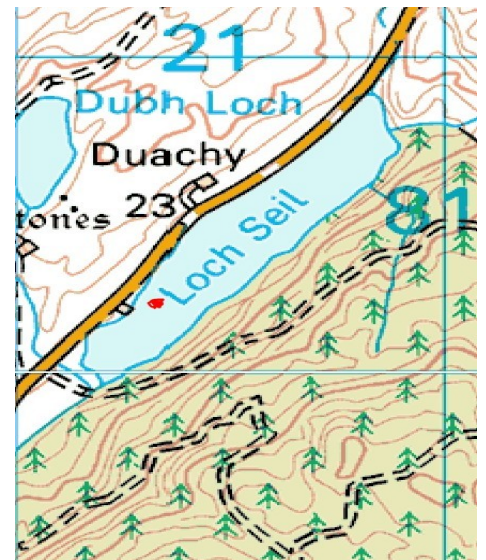
## Loch Seil (boat only, season permit holders only)

Brown Trout, Sea Trout

**Access:** Very easy to find. Lies next to the road. Take the A816 south of Oban for about seven miles then take the Easdale road at Kilninver for about two miles. Park at the little pump house building.

**Fishing:** Very weedy Loch full of plenty hard fighting small trout and the occasional sea trout at the back end. Was used for some time as-a water supply but has been bypassed recently with a new supply

**Boat:** Situated at the south end of the Loch next to the old pump station. Watch out for the sunken crannog about 100 yards north of the mooring, otherwise safe.



## Loch Nell (boat only, season permit holders only) - Brown Trout, Salmon, Sea Trout, Char



**Access: Three day's notice and a car registration must be provided to the Boat Booking Recorder to make a booking for a boat on Loch Nell. This is a condition of our fishing lease.**

From OBAN take the Glencruitten Road up past the golf course following the road until you get to the junction for Connel / Kilmore 2 miles. Turn right for Kilmore for about half a mile then taking the Taynuilt Road for about 2 miles passing the standing stone taking the first right turning down to your right along a farm track passing Torinturk Farm for about a mile (see map). Remember to close all gates to keep all farm stock in. **DRIVE WITH THE UTMOST CARE AND SLOWLY.** The boat is moored in a sheltered bay



**Boat:** The club has an agreement with the local estate to only fish north of a line extending from the fence entering the Loch at Loch Nell Lodge to approximately halfway up the far side of the Loch (see map).

DO NOT FISH ANYWHERE WE ARE NOT PERMITTED OR WE RISK LOSING OUR FISHING/BOAT ACCESS.

**Fishing:** This used to be a fantastic sea trout water but the sea trout population collapsed in the early 1980's and only in the last few years have there been signs of returning fish. Brown Trout fishing is very poor. Salmon enter the Loch after large spates from late June onwards and although you may see plenty fish, they are very difficult to catch. Char are occasionally caught from August onwards as they enter shallower water. We would ask anglers to voluntarily release all sea trout in an effort to encourage a healthy breeding population of fish.

**Flies:** Standard Trout Salmon and Seatrout patterns 8-14.

Notes: Nell Salmon and Sea trout season is February 11th to October 15th (inclusive). Catch returns (even blanks) must be filled in for Loch Nell and forwarded to the Club for the end of the season. All Sea trout under 12 inches to be returned.

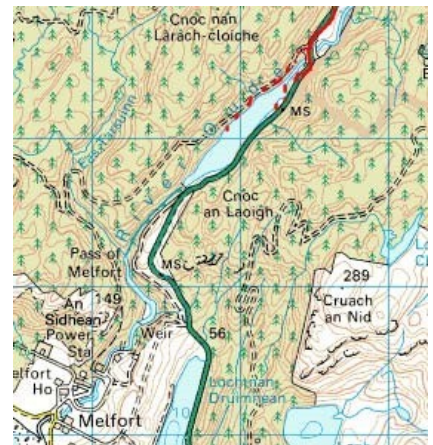
NO SUNDAY FISHING FOR SALMON OR SEA TROUT. ALL GRAVID/ COLOURED SALMON MUST BE RETURNED

## Oude Reservoir (Pronounced Ood Reservoir ) Brown trout

**Access:** From OBAN take the A816 for 14 miles. The loch lies at the roadside on the right hand side. We have fishing rights on the burn feeding the loch from the road bridge upstream for about half a mile. See the map below.

**Fishing:** Brown Trout Well-stocked little loch with free rising trout averaging 3 to the pound. Fishes well throughout the season. A club boat is often located on this loch for periods. Bank fishing can be difficult because of the fluctuating water levels.

**Flies:** Standard wet patterns

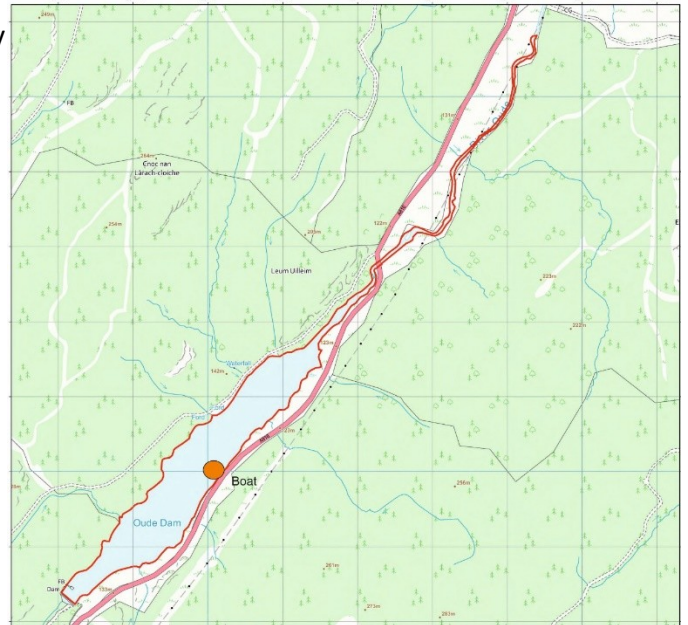


## Loch Gleann a' Bhearraidh Brown trout

Bank fishing is not permitted on Loch Gleann a' Bhearraidh.

**Access:** From Oban take the Lochgilphead road south for about two miles turning right at the Lerags road junction. Follow the signs to the Barn Bar Restaurant, taking care to park out of any one's way taking the forestry track past the pond and gate. Make your way up the forestry track keeping to the right hand track at its junction. A walk of about 15 - 20 minutes is needed to get to the Loch, but the gradients are easy and the track is clear.

**Boat :** The club has one boat on the Loch, situated in the bay as you arrive at the Loch. Under the terms of our lease, no more than two rods may fish and the boat is only suitable for that number.



**Fishing :** Can be dour but has a reputation for fish well over 1lb.

**Flies:** Standard wet and dries 12 - 14. Do not leave home without a Kate McLaren and Bibio.



## RIVER AWE - POLFEARN POOL

Brown Trout, Salmon, Sea trout, Rainbow Trout

**Access:** From Taynuilt take the B845 through the village following signs for Loch Etive Cruises. At the end of the road there is plenty car parking. To access the Fishing it is necessary to walk back from the car park towards Taynuilt and take the road on the left for a hundred yards. Walk between the two houses, through the gate (and not through people's gardens), continue over fields for 200 yards. Gorse is thick at bank side but there is usually space enough to fish after squeezing through it. Rocks can be slippery and the current strong - so take care when wading. This area is tidal, or at least the water is slowed by the level of the tide in Loch Etive. The Club's fishing extends from opposite the Inverawe Power Station (below the Weir) all the way down to where the river meets Loch Etive.

THE CLUB HAS FISHING ON THE **SOUTH** BANK (TAYNUILT SIDE) OF THE RIVER ONLY.

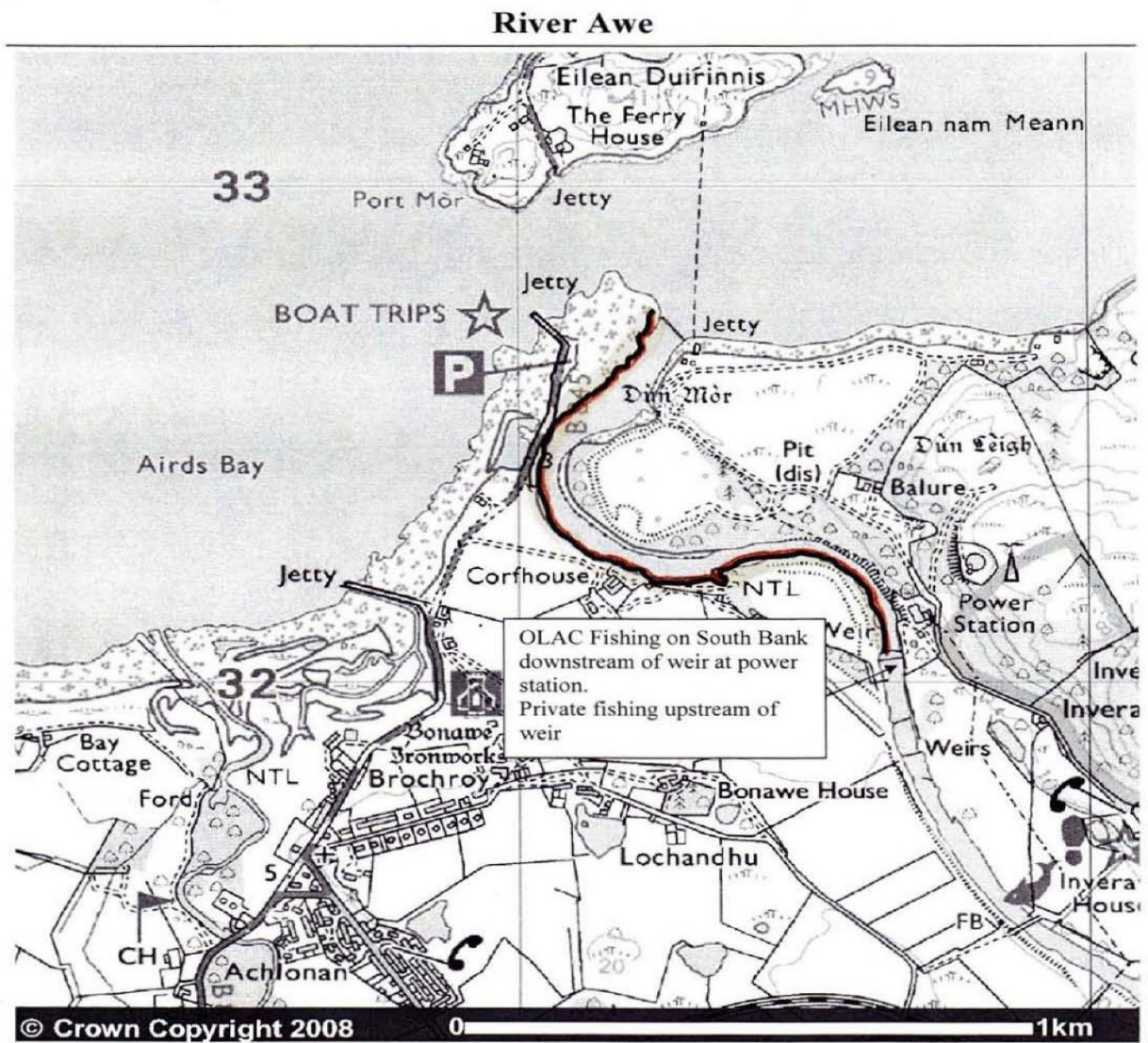
**Fishing:** Chance of Salmon throughout season. In low water fish may be found lurking in the deeper pools or runs. Brownies can be taken but are nothing remarkable. Sea trout can be taken in the river's lower reaches but we would urge you to voluntarily return these fish in an effort to build up a decent breeding stock.

Escaped rainbows can be caught up to double figures **PLEASE KILL ALL RAINBOW TROUT CAUGHT**

Season: The Awe Salmon and Sea trout season is February 11<sup>th</sup> to October 15<sup>th</sup> (inclusive), however proprietors have a long standing agreement to cease fishing by the end of September. Club Members are asked to respect this.

**NO SUNDAY FISHING FOR SALMON / SEATROUT - ALL GRAVID / COLOURED UP SALMON MUST BE RETURNED.**

**Flies:** Standard Salmon and Sea trout patterns, Ally's Shrimp does well.



River Awe – Polfearn Pool / Fishing Fields (South Bank Only)

Follow A85 from Oban to Taynuilt. Turn left at war memorial and follow B845 (signs for Loch Etive Cruises). Salmon, Sea Trout, Brown Trout and Rainbows. No Sunday fishing.